



*City of*  
**SANTA CLARITA**  
**PUBLIC LIBRARY**

**STATISTICAL REPORT**  
Fiscal Year 2017-18  
July 2017

SANTA CLARITA PUBLIC LIBRARY STATISTICS  
FISCAL YEAR 2017-18

**Statistical Summary**  
**Month-to-Date**

**JULY 2017**

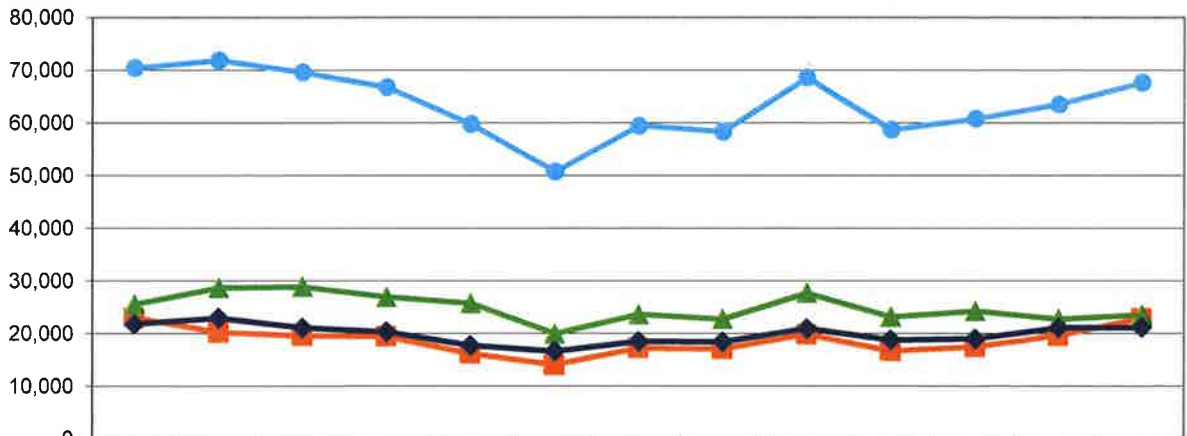
	CANYON COUNTRY		OLD TOWN NEWHALL		VALENCIA		DIGITAL		TOTALS	
	July 2017	July 2016	July 2017	July 2016	July 2017	July 2016	July 2017	July 2016	July 2017	July 2016
Circulation	33,896	34,474	26,460	26,743	48,293	50,974	11,502	11,970	120,151	124,161
Patron Traffic	22,902	23,069	23,528	25,546	21,209	21,845			67,639	70,460
PC Reservations	4,477	4,512	4,135	4,318	3,140	3,283			11,752	12,113
Volunteer Hours	482	867	319	665	420	411			1,221	1,943
Holds Filled	3,688	3,399	2,633	3,022	4,167	4,922			10,488	11,343
Number of Programs	55	43	62	62	45	50			162	155
Program Attendance	1,282	1,189	3,138	2,823	1,508	1,568			5,928	5,580
Library Cards Issued	546	430	409	526	352	679			1,307	1,635
Wi-Fi Users	1,626	1,700	2,246	2,401	1,238	1,331			5,110	5,432
Homework Help: Students Assisted	n/a	n/a	n/a	n/a	n/a	n/a	n/a	n/a	n/a	n/a
Databases									13,391	21,088
Website Visits									48,524	52,416
Outreach Events									3	5
Outreach Attendance									163	70

SANTA CLARITA PUBLIC LIBRARY STATISTICS  
 FISCAL YEAR 2017-18  
 PATRON VISITS

A total of **67,639** patrons visited the Santa Clarita Public Library (SCPL), with **22,902** visitors at Canyon Country, **23,528** at Newhall, and **21,209** at Valencia.

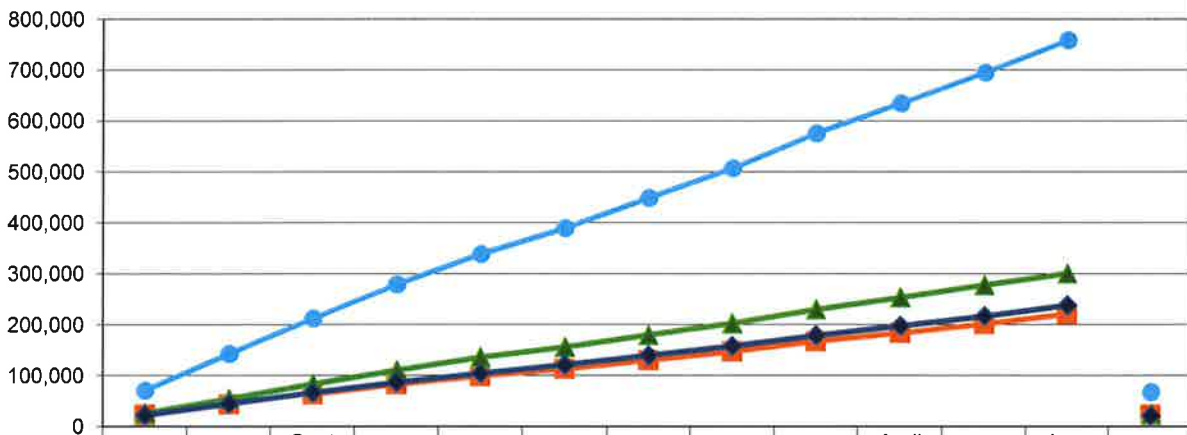


Patron Traffic/Visits - Monthly



	July '16	Aug '16	Sept '16	Oct '16	Nov '16	Dec '16	Jan '17	Feb '17	Mar '17	April '17	May '17	June '17	July '17
Cyn Country	23069	20247	19608	19475	16264	14110	17285	17114	19886	16756	17495	19641	22902
Newhall	25546	28658	28883	26964	25743	19997	23664	22782	27730	23190	24273	22772	23528
Valencia	21845	22961	21114	20356	17761	16683	18550	18462	20992	18812	19037	21118	21209
SCPL	70460	71866	69605	66795	59768	50790	59499	58358	68608	58758	60805	63531	67639

Cumulative Patron Traffic/Visits - YTD



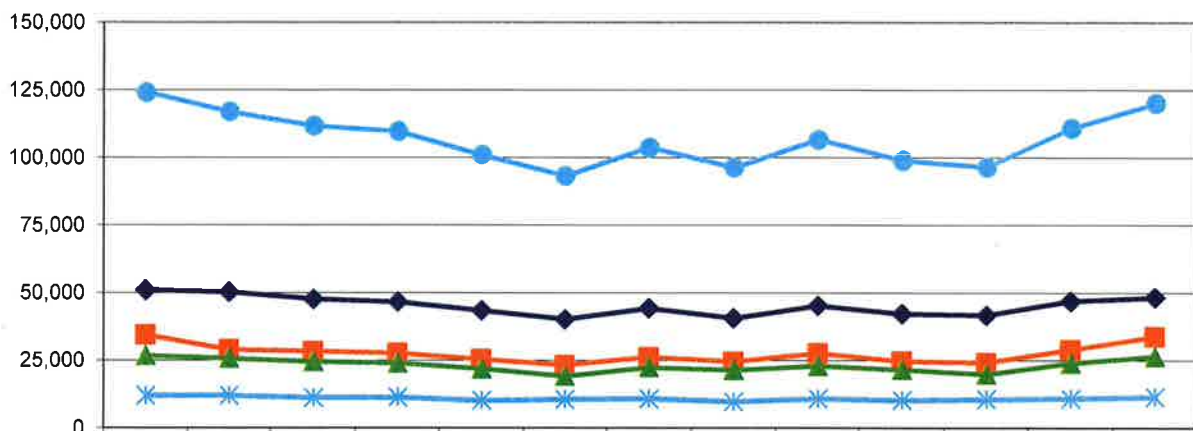
	July '16	Aug '16	Sept '16	Oct '16	Nov '16	Dec '16	Jan '17	Feb '17	Mar '17	April '17	May '17	June '17	July '17
Cyn Country	23069	43316	62924	82399	98663	112773	130058	147172	167058	183814	201309	220950	22902
Newhall	25546	54204	83087	110051	135794	155791	179455	202237	229967	253157	277430	300202	23528
Valencia	21845	44806	65920	86276	104037	120720	139270	157732	178724	197536	216573	237691	21209
SCPL	70460	142326	211931	278726	338494	389284	448783	507141	575749	634507	695312	758843	67639

SANTA CLARITA PUBLIC LIBRARY STATISTICS  
 FISCAL YEAR 2017-18  
 CIRCULATION

A total of **120,151** books and materials were  
 circulated in the SCPL, with  
**33,896** books and materials at Canyon Country,  
**26,460** at Newhall, **48,293** at Valencia, and  
**11,502** at the Digital Library.

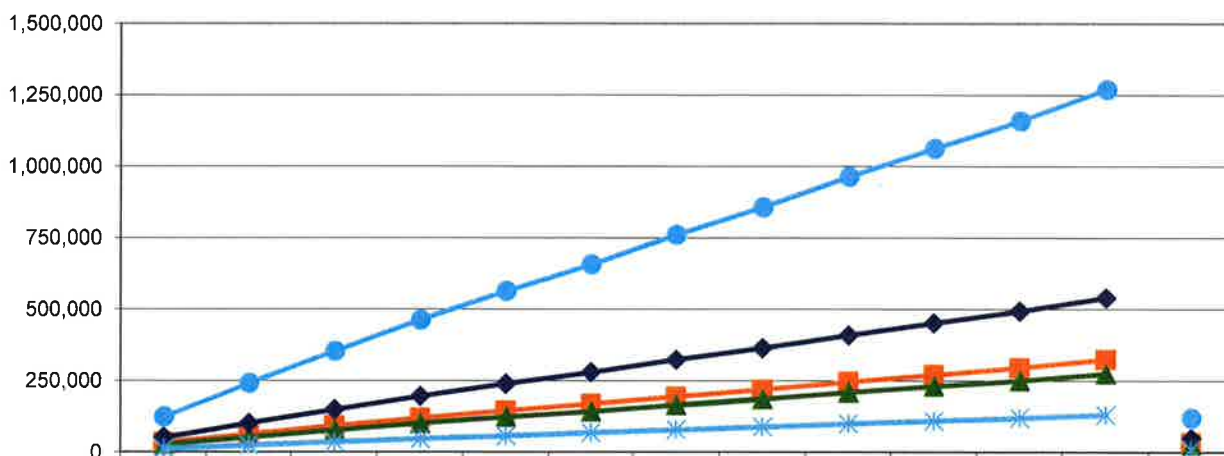


Circulation - Monthly



	July '16	Aug '16	Sept '16	Oct '16	Nov '16	Dec '16	Jan '17	Feb '17	Mar '17	April '17	May '17	June '17	July '17
Cyn Country	34474	28991	28374	27717	25483	23254	26230	24567	27728	24768	24242	28998	33896
Newhall	26743	25717	24500	23982	21845	19200	22414	21378	22920	21543	19908	23988	26460
Valencia	50974	50283	47683	46662	43448	40210	44318	40640	45213	42300	41759	46945	48293
Digital	11970	11978	11225	11369	10191	10630	10824	9778	10867	10333	10670	10982	11502
SCPL	124161	116969	111782	109730	100967	93294	103786	96363	106728	98944	96579	110913	120151

Cumulative Circulation - YTD



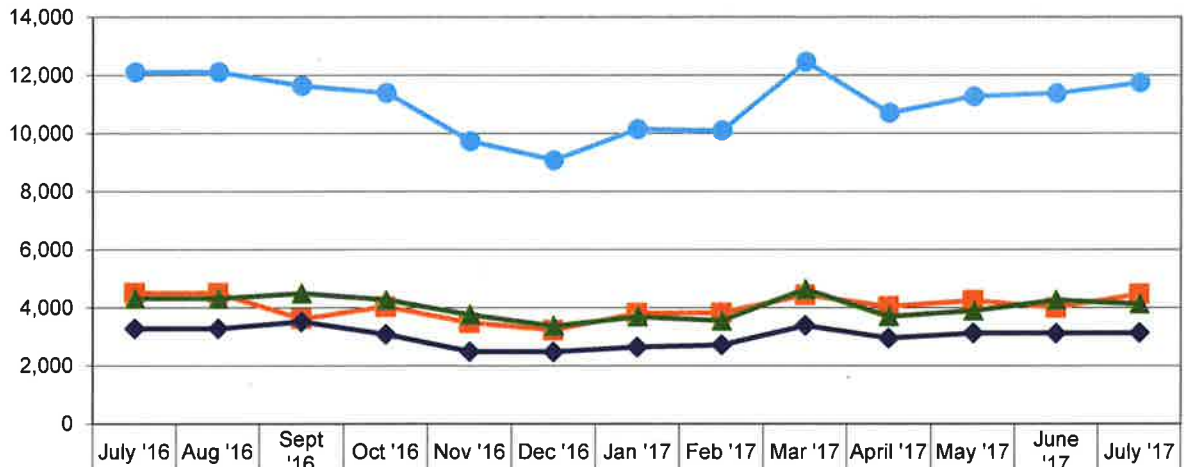
	July '16	Aug '16	Sept '16	Oct '16	Nov '16	Dec '16	Jan '17	Feb '17	Mar '17	April '17	May '17	June '17	July '17
Cyn Country	34474	63465	91839	119556	145039	168293	194523	219090	246818	271586	295828	324826	33896
Newhall	26743	52460	76960	100942	122787	141987	164401	185779	208699	230242	250150	274138	26460
Valencia	50974	101257	148940	195602	239050	279260	323578	364218	409431	451731	493490	540435	48293
Digital	11970	23948	35173	46542	56733	67363	78187	87965	98832	109165	119835	130817	11502
SCPL	124161	241130	352912	462642	563609	656903	760689	857052	963780	1062724	1159303	1270216	120151

SANTA CLARITA PUBLIC LIBRARY STATISTICS  
 FISCAL YEAR 2017-18  
 PUBLIC COMPUTER RESERVATIONS



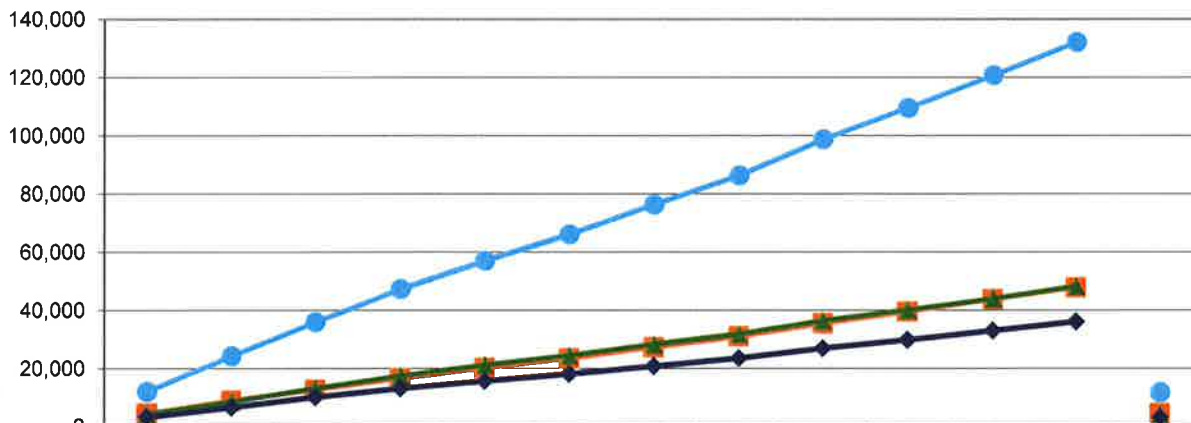
A total of **11,752** patrons reserved and used a public computer in the SCPL. **4,477** patrons used public computers in the Canyon Country Library, **4,135** in Newhall Library, and **3,140** at Valencia Library.

Public Computer Reservations - Monthly



	July '16	Aug '16	Sept '16	Oct '16	Nov '16	Dec '16	Jan '17	Feb '17	Mar '17	April '17	May '17	June '17	July '17
Cyn Country	4512	4512	3624	4041	3489	3230	3811	3832	4445	4053	4256	4006	4477
Newhall	4318	4318	4493	4271	3755	3370	3691	3552	4638	3703	3897	4265	4135
Valencia	3283	3283	3521	3082	2491	2482	2649	2718	3392	2954	3126	3120	3140
SCPL	12113	12113	11638	11394	9735	9082	10151	10102	12475	10710	11279	11391	11752

Cumulative Public Computer Reservations - YTD



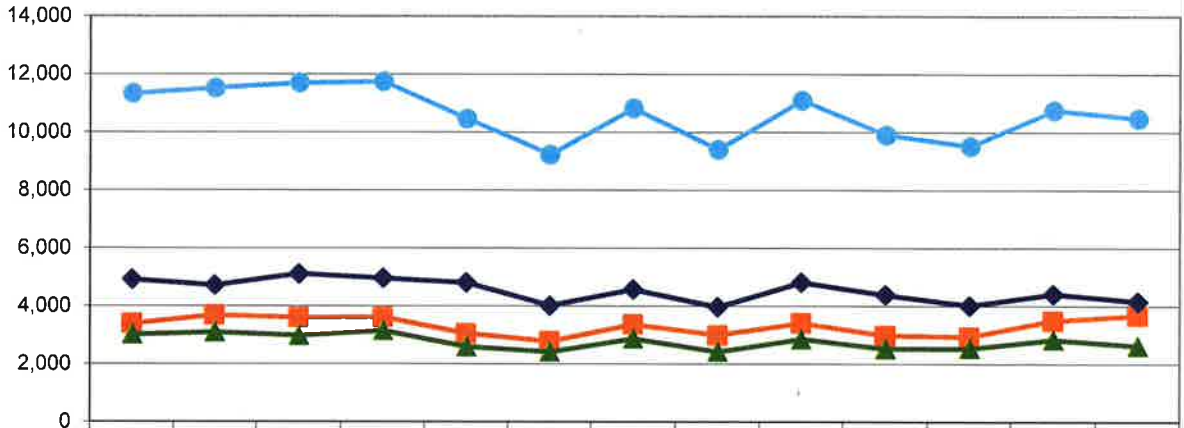
	July '16	Aug '16	Sept '16	Oct '16	Nov '16	Dec '16	Jan '17	Feb '17	Mar '17	April '17	May '17	June '17	July '17
Cyn Country	4512	9024	12648	16689	20178	23408	27219	31051	35496	39549	43805	47811	4477
Newhall	4318	8636	13129	17400	21155	24525	28216	31768	36406	40109	44006	48271	4135
Valencia	3283	6566	10087	13169	15660	18142	20791	23509	26901	29855	32981	36101	3140
SCPL	12113	24226	35864	47258	56993	66075	76226	86328	98803	109513	120792	132183	11752

SANTA CLARITA PUBLIC LIBRARY STATISTICS  
FISCAL YEAR 2017-18  
HOLDS FILLED

A total of **10,488** holds were filled in the SCPL. **3,688** holds were filled in the Canyon Country Library, **2,633** in Newhall Library, and **4,167** in Valencia Library.

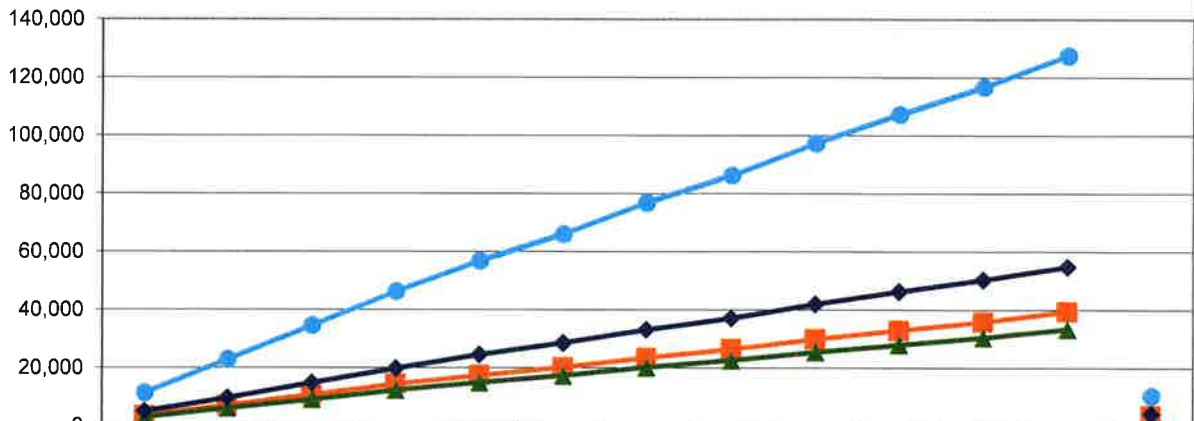


**Holds Filled - Monthly**



	July '16	Aug '16	Sept '16	Oct '16	Nov '16	Dec '16	Jan '17	Feb '17	Mar '17	April '17	May '17	June '17	July '17
<b>Cyn Country</b>	3399	3700	3608	3628	3060	2790	3377	3009	3420	2997	2954	3503	3688
<b>Newhall</b>	3022	3099	2983	3156	2600	2429	2878	2429	2866	2532	2549	2845	2633
<b>Valencia</b>	4922	4726	5115	4967	4814	4022	4582	3974	4822	4395	4022	4420	4167
<b>SCPL</b>	11343	11525	11706	11751	10474	9241	10837	9412	11108	9924	9525	10768	10488

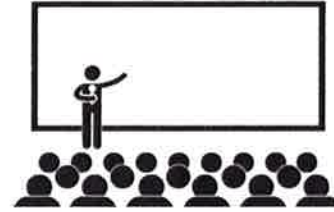
**Cumulative Holds Filled - YTD**



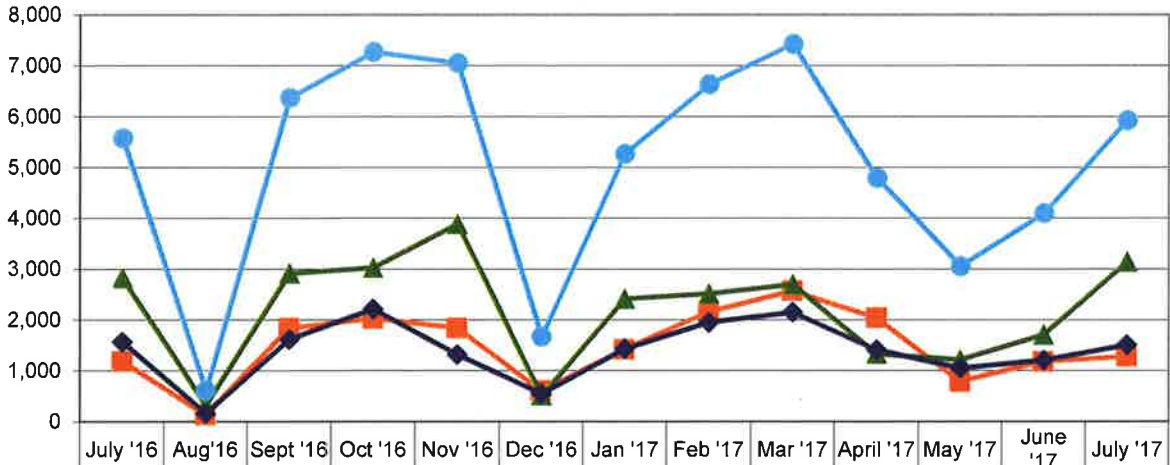
	July '16	Aug '16	Sept '16	Oct '16	Nov '16	Dec '16	Jan '17	Feb '17	Mar '17	April '17	May '17	June '17	July '17
<b>Cyn Country</b>	3399	7099	10707	14335	17395	20185	23562	26571	29991	32988	35942	39445	3688
<b>Newhall</b>	3022	6121	9104	12260	14860	17289	20167	22596	25462	27994	30543	33388	2633
<b>Valencia</b>	4922	9648	14763	19730	24544	28566	33148	37122	41944	46339	50361	54781	4167
<b>SCPL</b>	11343	22868	34574	46325	56799	66040	76877	86289	97397	107321	116846	127614	10488

SANTA CLARITA PUBLIC LIBRARY STATISTICS  
 FISCAL YEAR 2017-18  
 PROGRAM ATTENDANCE

A total of **5,928** attendees participated in a program at the SCPL. **1,282** attendees at the Canyon Country Library, **3,138** at Newhall Library, and **1,508** at Valencia Library.

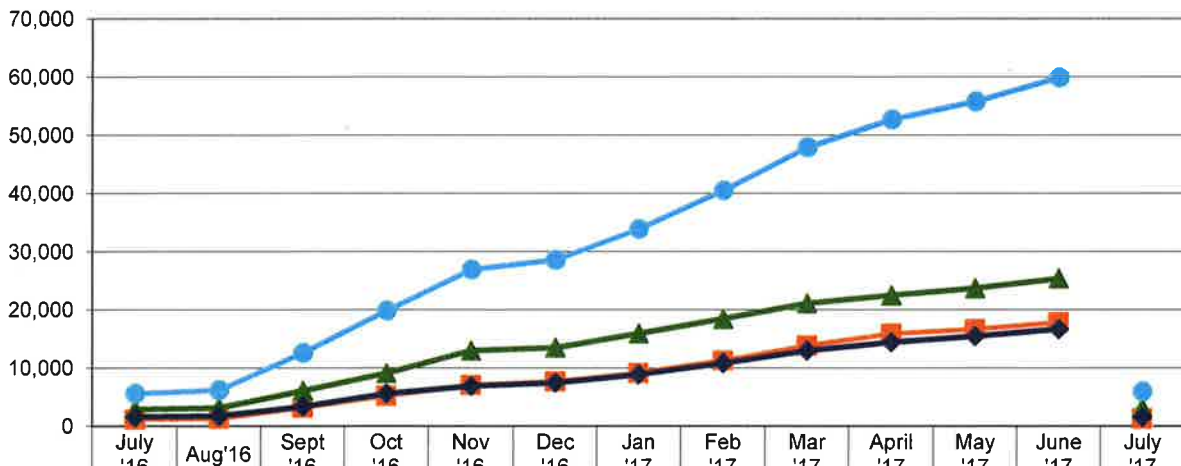


Program Attendance - Monthly



— Cyn Country	1189	133	1844	2029	1848	612	1423	2166	2578	2047	792	1183	1282
— Newhall	2823	320	2914	3029	3887	510	2415	2516	2700	1333	1214	1709	3138
— Valencia	1568	160	1619	2218	1320	553	1434	1956	2154	1415	1054	1208	1508
— SCPL	5580	613	6377	7276	7055	1675	5272	6638	7432	4795	3060	4100	5928

Cumulative Program Attendance - YTD



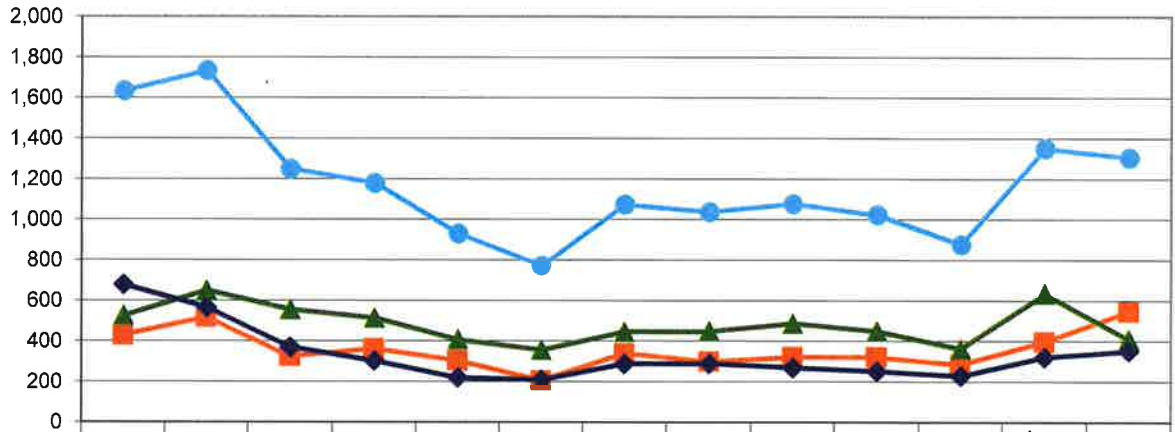
— Cyn Country	1189	1322	3166	5195	7043	7655	9078	11244	13822	15869	16661	17844	1282
— Newhall	2823	3143	6057	9086	12973	13483	15898	18414	21114	22447	23661	25370	3138
— Valencia	1568	1728	3347	5565	6885	7438	8872	10828	12982	14397	15451	16659	1508
— SCPL	5580	6193	12570	19846	26901	28576	33848	40486	47918	52713	55773	59873	5928

SANTA CLARITA PUBLIC LIBRARY STATISTICS  
 FISCAL YEAR 2017-18  
 LIBRARY CARDS ISSUED

A total of **1,307** new Library cards were issued at the SCPL. **546** new cards were issued at the Canyon Country Library, **409** at Newhall Library, and **352** at Valencia Library.

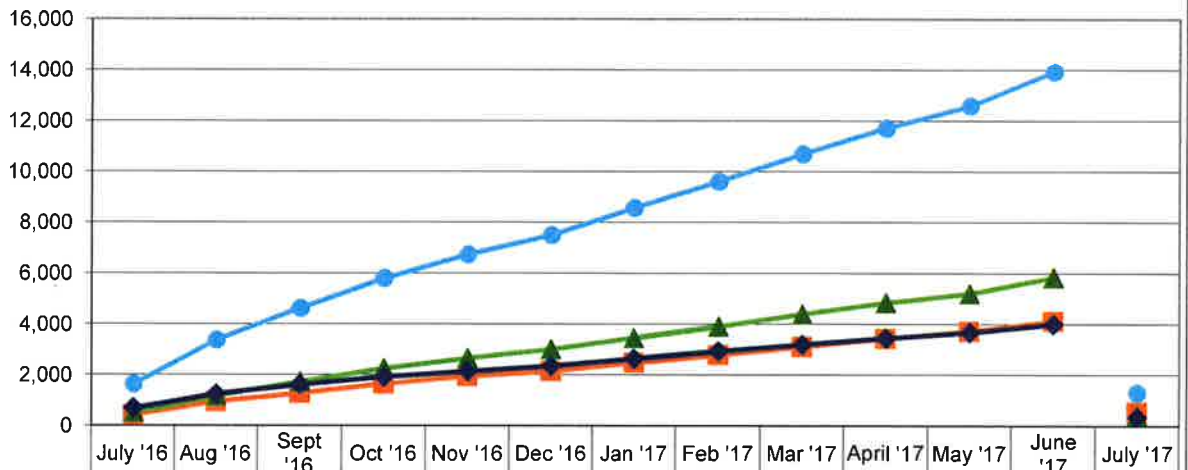


Library Cards Issued - Monthly



	July '16	Aug '16	Sept '16	Oct '16	Nov '16	Dec '16	Jan '17	Feb '17	Mar '17	April '17	May '17	June '17	July '17
Cyn Country	430	518	325	363	305	206	340	300	322	322	286	398	546
Newhall	526	650	555	514	407	356	446	448	487	449	362	633	409
Valencia	679	566	370	303	219	209	288	290	269	252	229	321	352
SCPL	1635	1734	1250	1180	931	771	1074	1038	1078	1023	877	1352	1307

Cumulative Library Cards Issued - YTD



	July '16	Aug '16	Sept '16	Oct '16	Nov '16	Dec '16	Jan '17	Feb '17	Mar '17	April '17	May '17	June '17	July '17
Cyn Country	430	948	1273	1636	1941	2147	2487	2787	3109	3431	3717	4115	546
Newhall	526	1176	1731	2245	2652	3008	3454	3902	4389	4838	5200	5833	409
Valencia	679	1245	1615	1918	2137	2346	2634	2924	3193	3445	3674	3995	352
SCPL	1635	3369	4619	5799	6730	7501	8575	9613	10691	11714	12591	13943	1307

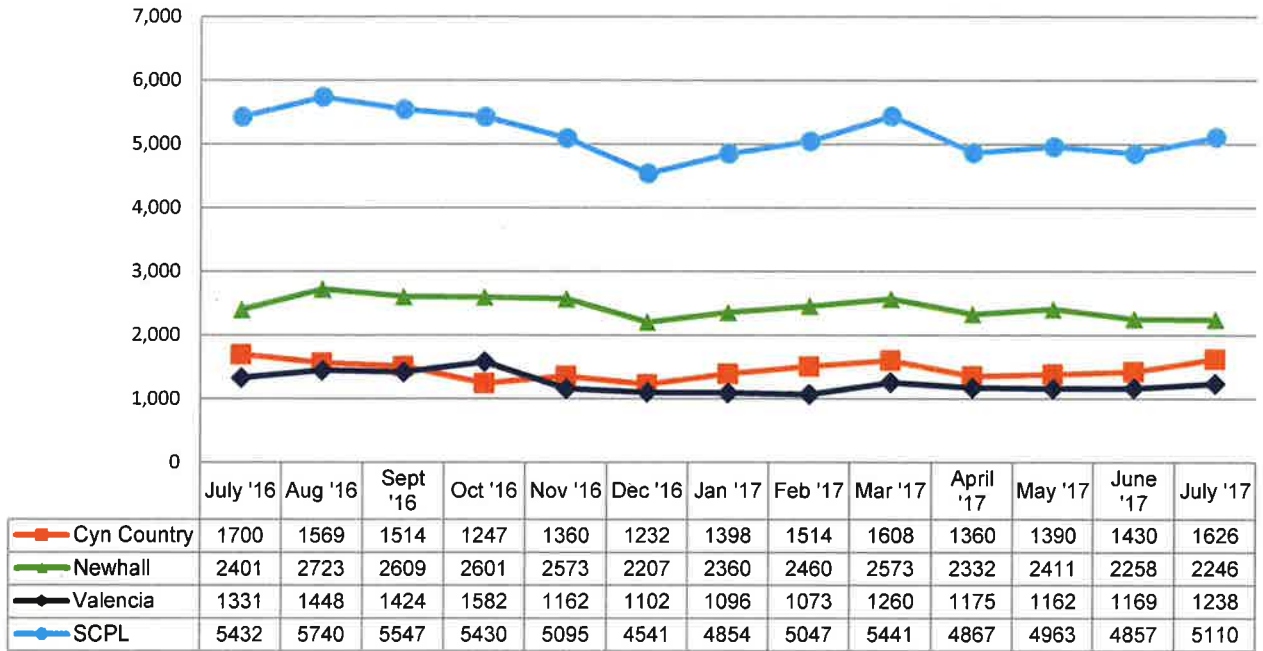


SANTA CLARITA PUBLIC LIBRARY STATISTICS  
 FISCAL YEAR 2017-18  
 WI-FI USERS

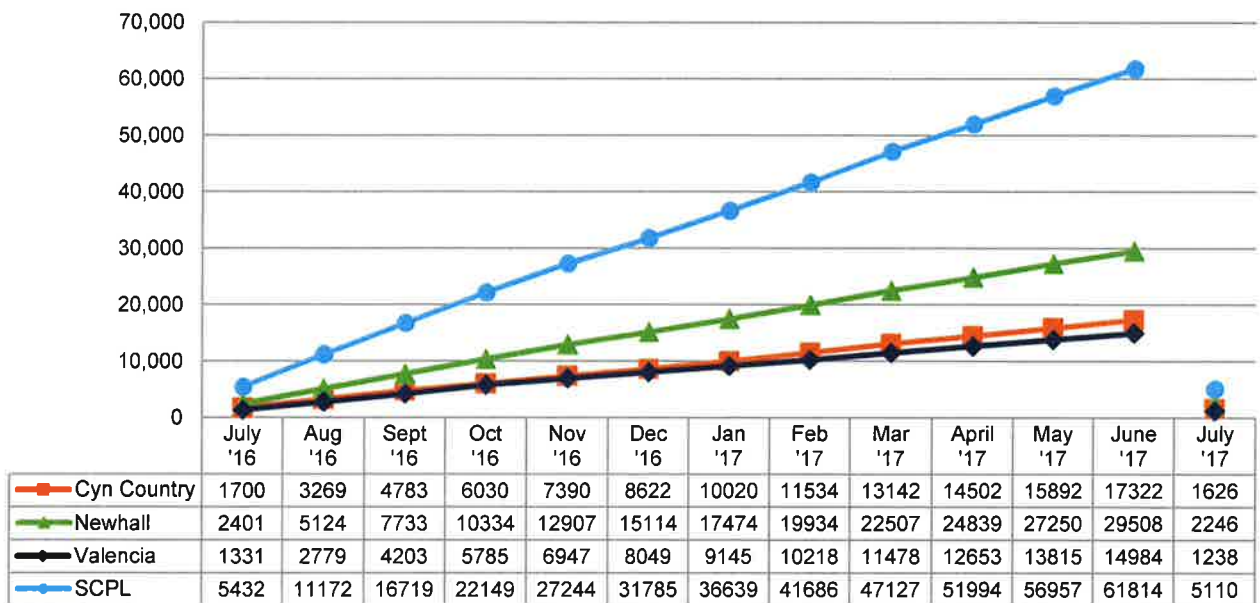
A total of **5,110** Library patrons used the SCPL's free wireless internet (Wi-Fi). **1,626** Wi-Fi users were at the Canyon Country Library, **2,246** at Newhall Library, and **1,238** at Valencia Library.



Wi-Fi Users - Monthly



Cumulative Wi-Fi Users - YTD

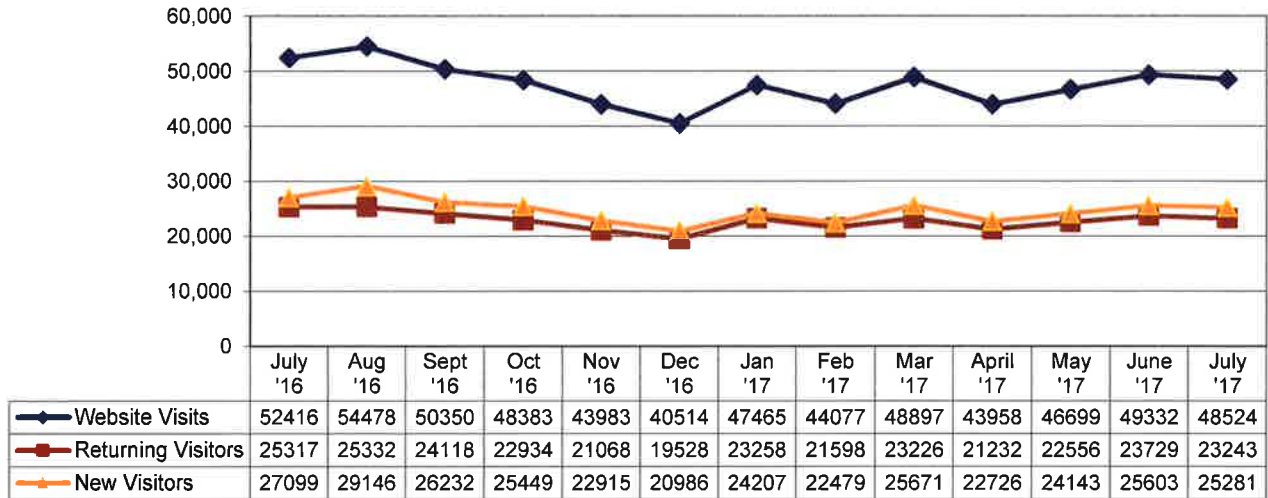


SANTA CLARITA PUBLIC LIBRARY STATISTICS  
FISCAL YEAR 2017-18  
LIBRARY WEBSITE

The SCPL's website received a total of **48,524** visits. **23,243** were returning visitors and **25,281** were new visitors to the Library website. Visitors to the SCPL website viewed **71,174** website pages this month.



**Library Website Visits - Monthly**



**Library Web Pages Viewed -YTD**

